

©The Carter Center.

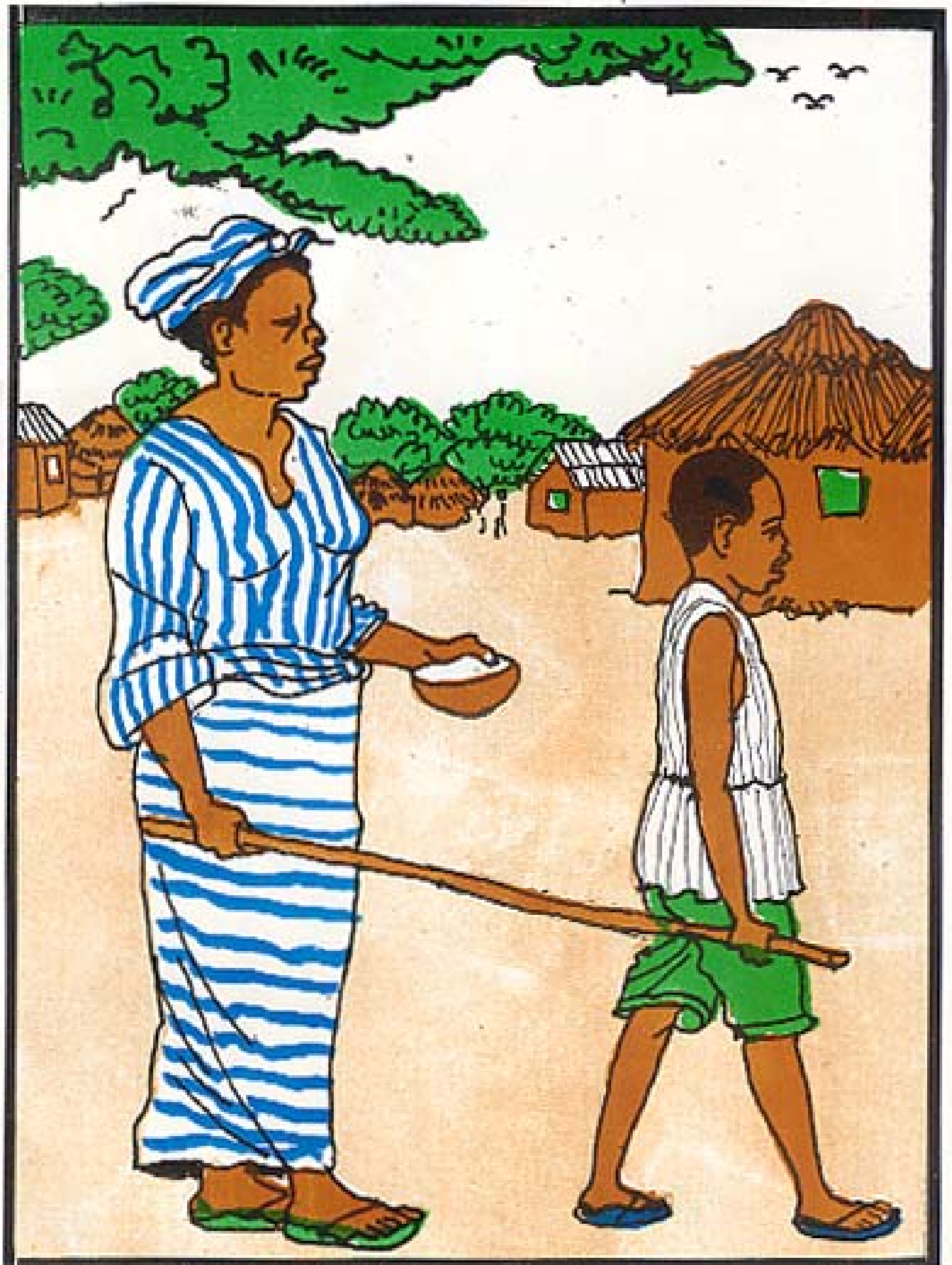
GHANA TRACHOMA CONTROL PROGRAMME

Supported by Global 2000, Accra
The Carter Center

**TRACHOMA PREVENTION
PICTURE BOOK**



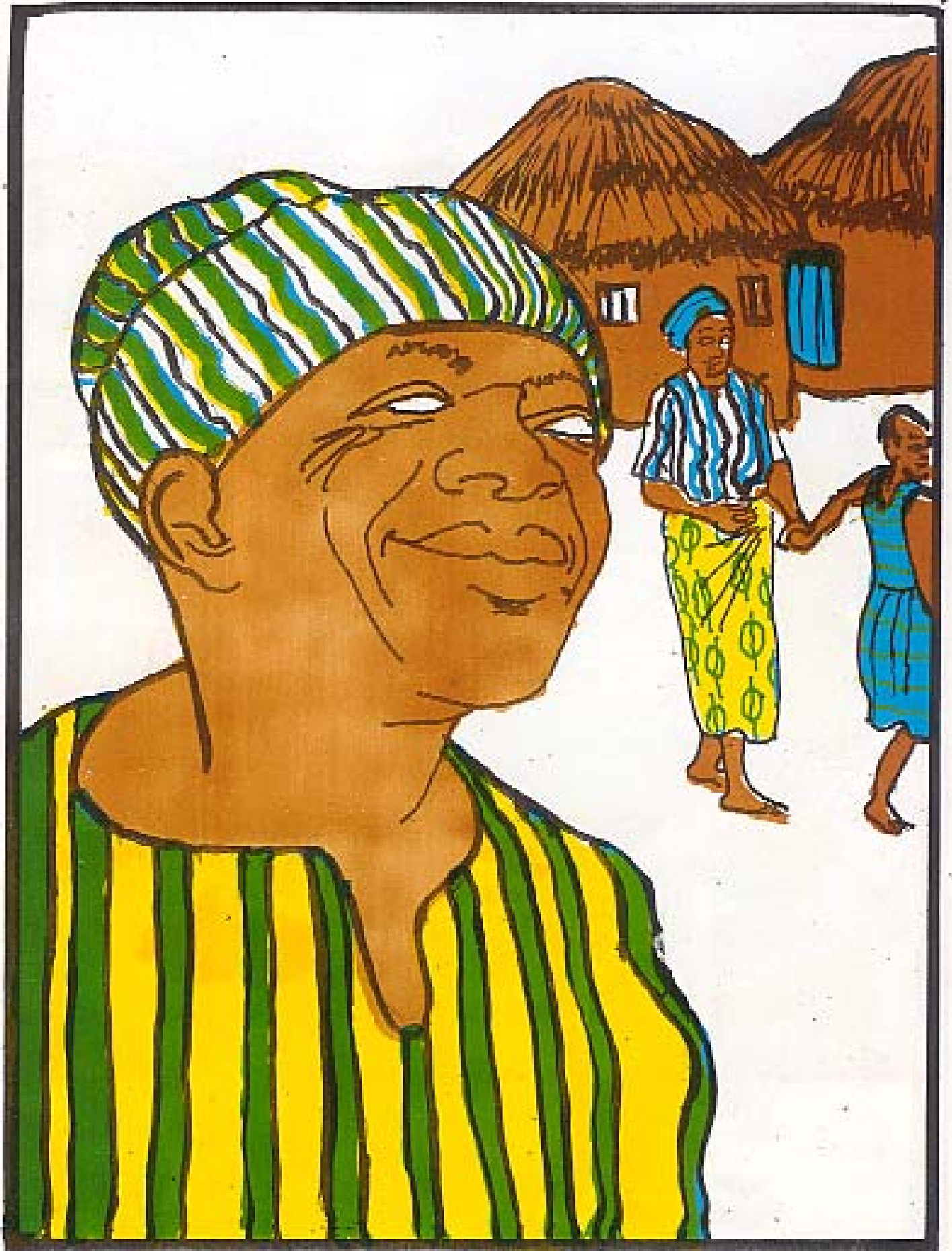
EFFECT OF BLINDING TRACHOMA



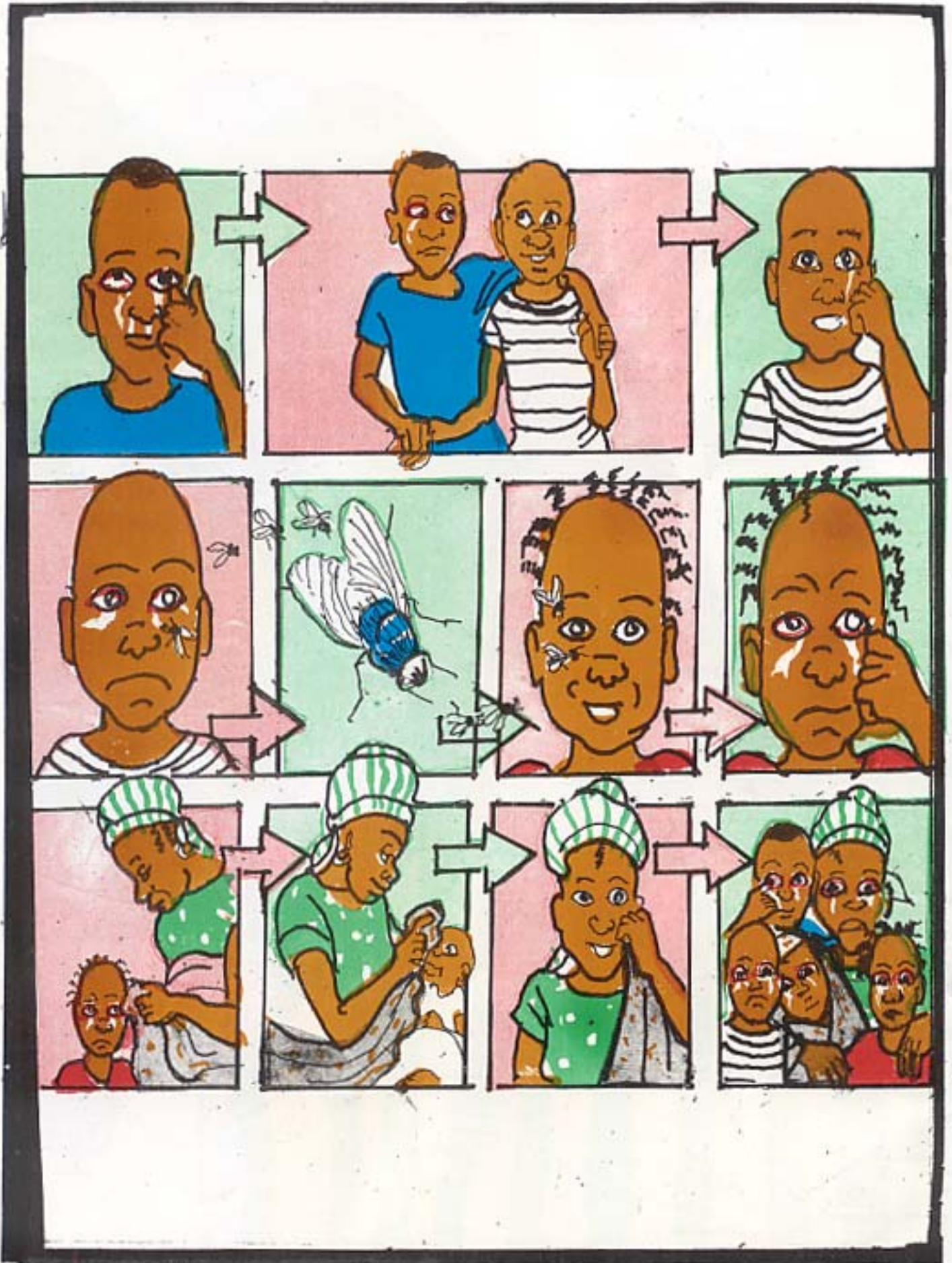
SICK EYE



BLIND PEOPLE

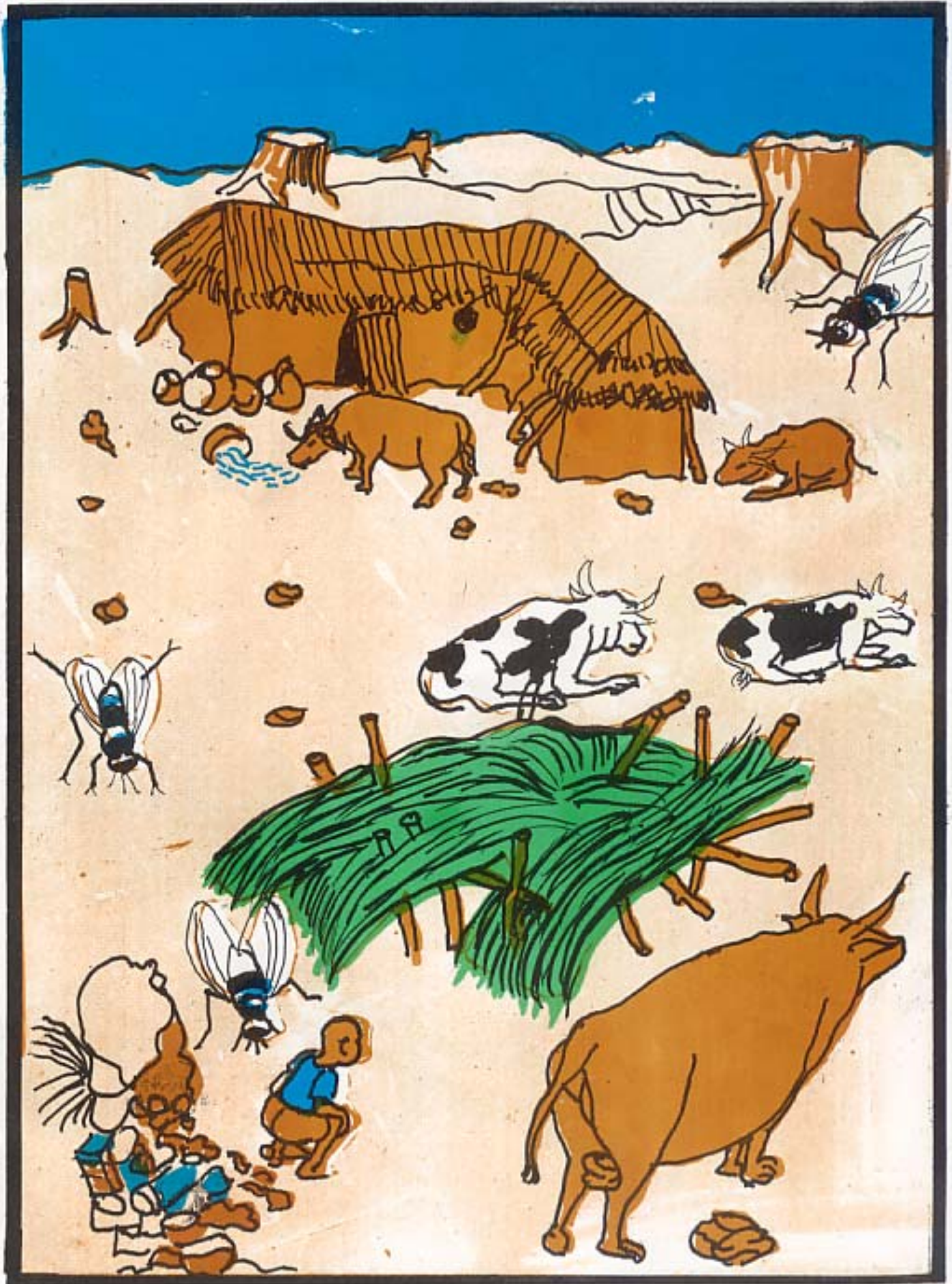


MODES OF TRANSMISSION



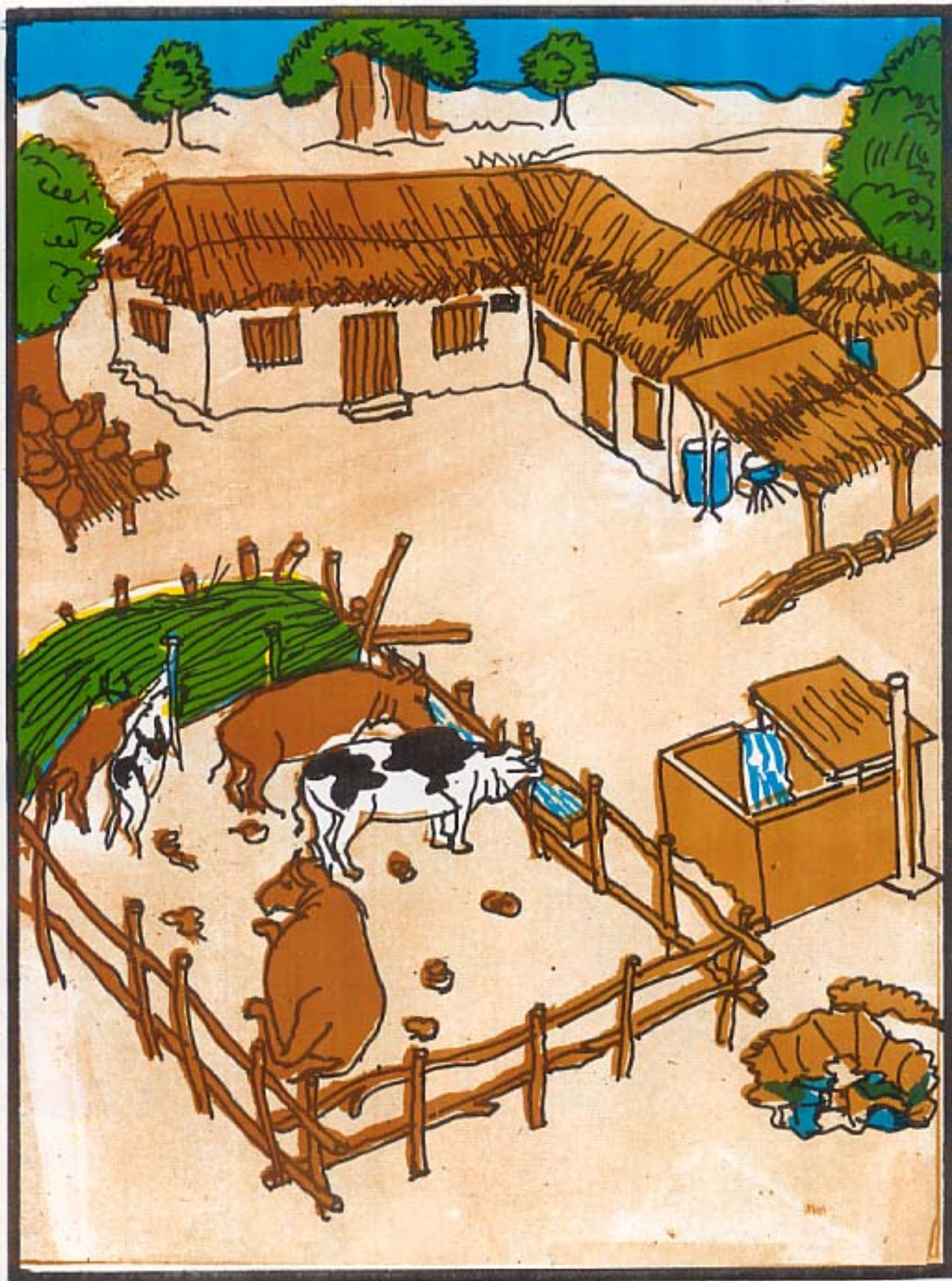
ENVIRONMENTAL FACTORS

(UNCLEAN)



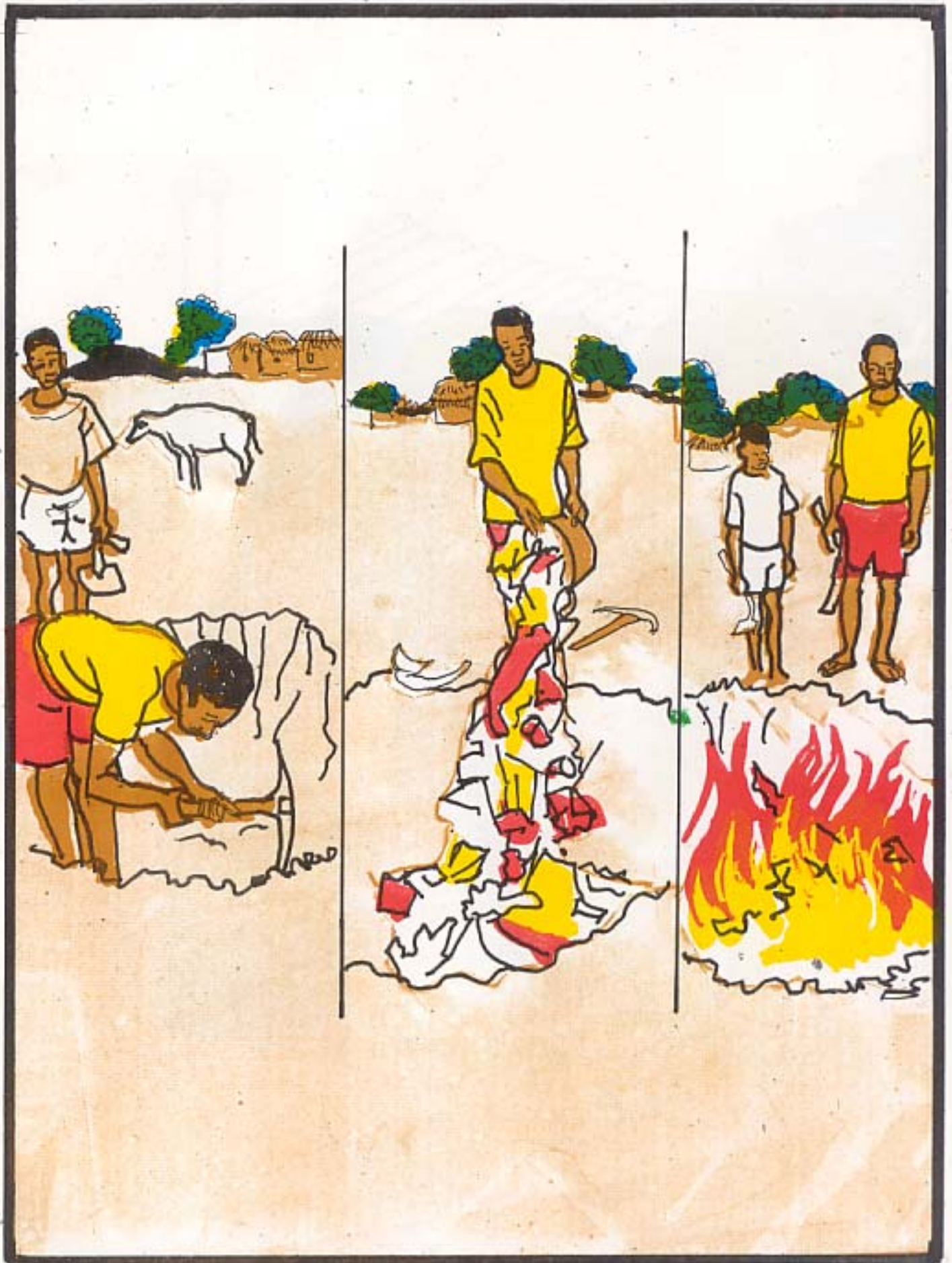
ENVIRONMENTAL FACTORS

(CLEAN)



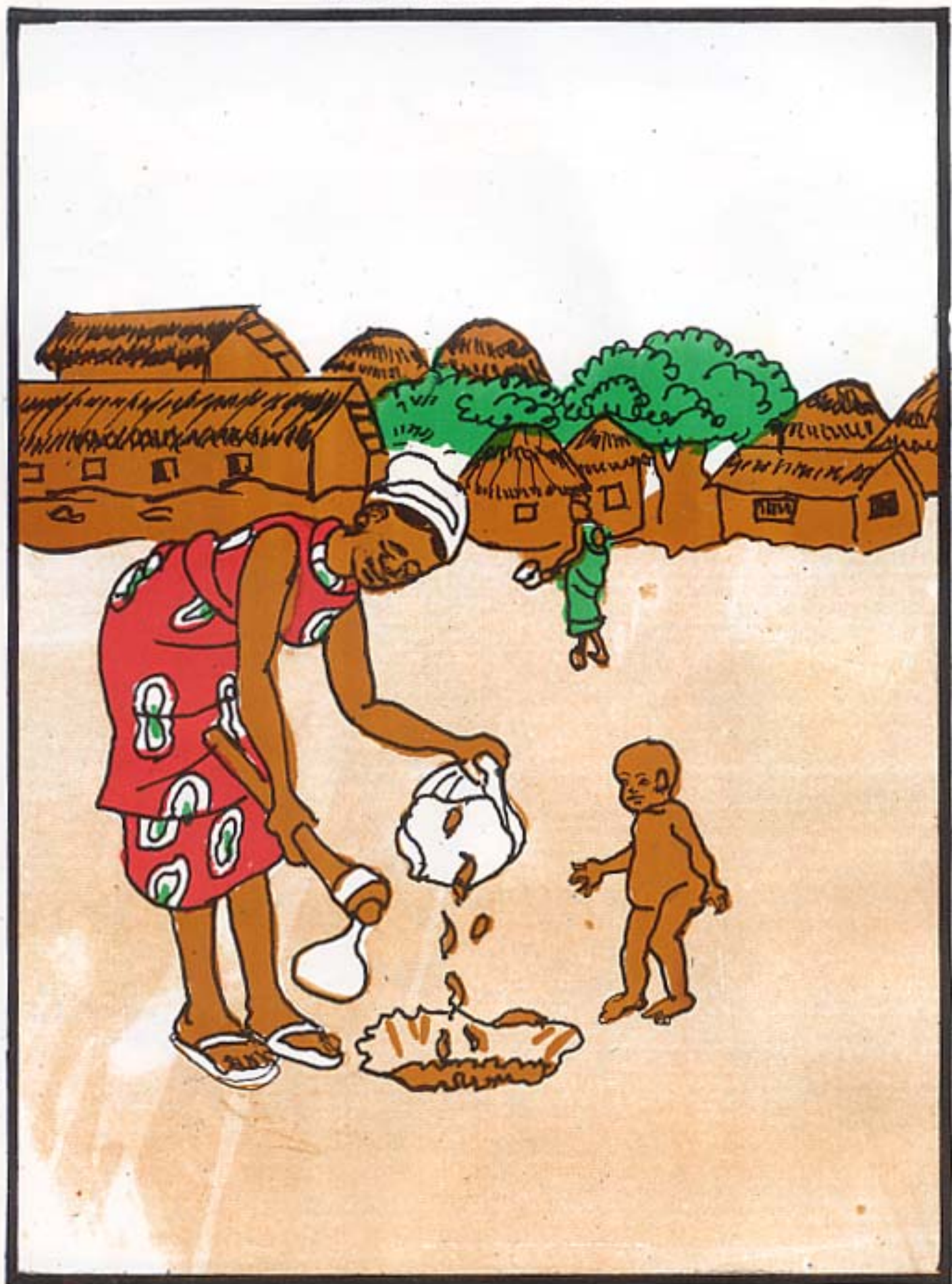
ENVIRONMENTAL FACTORS

(REFUSE DISPOSAL)



ENVIRONMENTAL FACTORS

BURYING OF FAECES



ENVIRONMENTAL FACTORS

USING LATRINE TO DISPOSE OF FAECES



PREVENTION
(FACE WASHING)

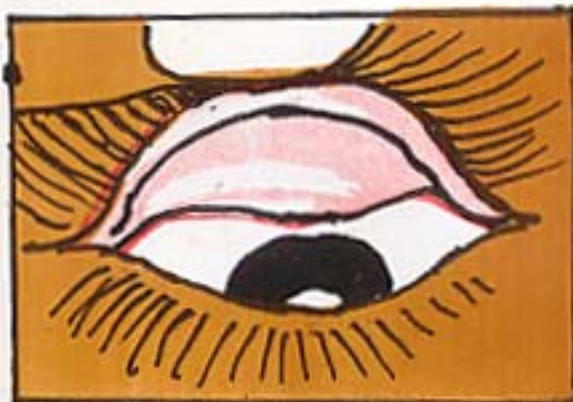
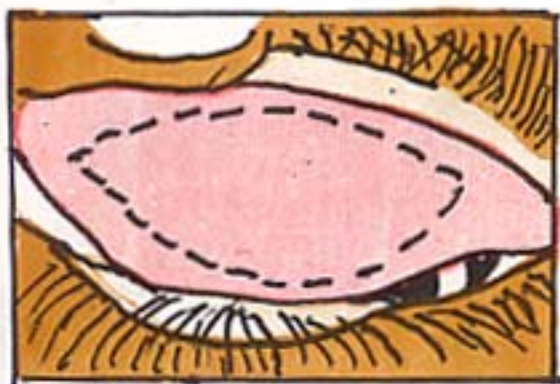


TREATMENT USING EYE OINTMENT

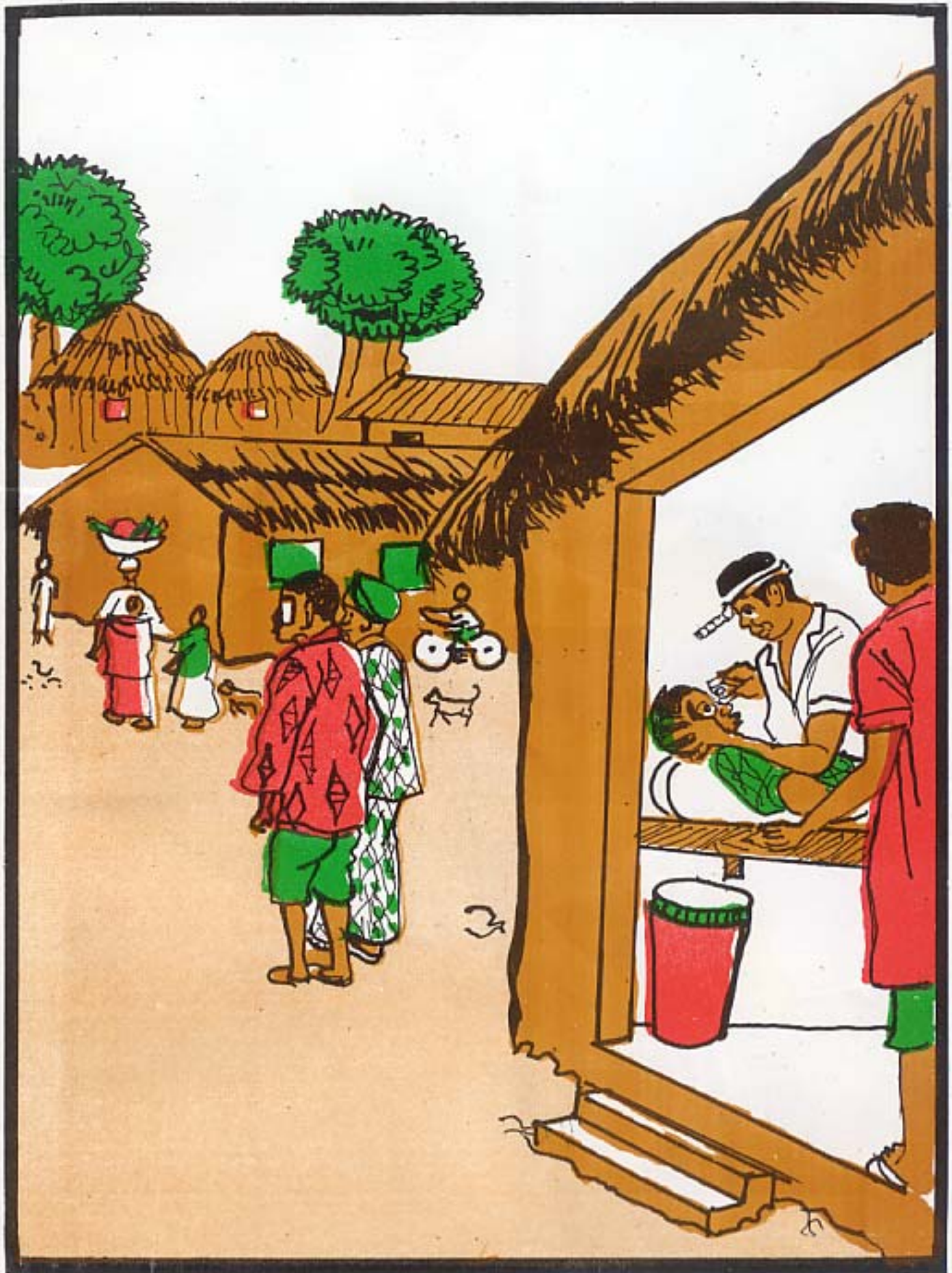


SICK EYE

(STAGES OF TRACHOMA)



SURGERY (IN COMMUNITY)



SURGERY

(AT THE HOSPITAL)

